



NEWSLETTER



**Fleece Naturally
Expansion
Page 2**

**Diet
Supplements
Page 8**

**Run the Berg
Page 16**

**Branding Irons for
Makunga Association
Page 12**

**Carbon Initiative
Activities Cycle
Page 10**

Recent Moves by Mobile Shearing

Since the end of September, Fleece Naturally Africa has been actively engaged in our mobile shearing operations, partnering with six local associations to shear over 4,000 sheep. So far, this season has produced more than 9,000 kilograms of quality wool, with 50 bales already on their way to auction. We're excited to report that we are only one-third of the way through the number of associations signed up for shearing, putting Fleece Naturally Africa on track for a bumper year!



We recently had the privilege of hosting Donna Greene from Lapersonne Wool, who led an insightful workshop on wool classing and sorting. Participants dove into hands-on activities, working directly with fleece freshly sheared from the sheep. Donna shared valuable insights into the complexities of wool classing, explaining why some wools might be discounted and emphasizing the importance of proper sorting to maximize the value of each fleece. This knowledge is crucial for ensuring that our farmers receive fair compensation for their hard work.

We're also excited to welcome our new intern, Katlego Tsolele, who joined the Fleece Naturally team in September. Katlego has quickly proven himself to be a valuable asset, mastering the ropes with impressive speed and taking charge of much of the administrative and organizing tasks in the field. We're thrilled to have him on board.

Additionally, we are welcoming filmmaker Yoav Dagan, who is documenting our shearing operations. His upcoming film will explore the journey of wool from "soil to sweater", helping both farmers and consumers gain a deeper understanding of the vital processes involved. Through this project, we aim to raise awareness of Fleece Naturally's mission and the dedication of the farmers we support.

Afrivet sheep scab campaign

The Afrivet EC Animal Health Technician team successfully rolled out Ecomectin 1% providing marking sticks, needles and syringes to 26 associations in Tsitsa, KwaBhaca, Umzimkhulu and Engcobo catchments.

The aim of the campaign was to assist farmers to treat their sheep against sheep scab. If left untreated for a prolonged period of time, sheep scab could have dire implications to the health of the sheep and significant reduction in wool quality and quantity. Farmers were thankful to Meat Naturally and Afrivet for the veterinary support.

The number of participating associations has greatly increased since the inception of the programme. No cases of sheep scab have been reported/observed after treatments in all the associations.



Fleece Naturally Africa

WHO IS FLEECE NATURALLY?

Fleece Naturally is a business that works with farmers and farmer associations to:

- Make sheep healthier and better bred.
- Improve how animals graze to keep the land healthy.
- Help farmers sell wool by providing mobile shearing sheds and getting Responsible Wool Standard (RWS) certification.



WHAT IS THE RESPONSIBLE WOOL STANDARD?

The RWS is a global certification for sheep wool. It ensures:

- Wool comes from animals that are treated well.
- Grazing land is well-managed.
- People working with sheep and wool are treated fairly.



Wool that meets this standard is worth more money.

WHY IS FLEECE NATURALLY PROMOTING RWS IN MY AREA?

Fleece Naturally helps farmers meet RWS standards to get their wool certified. This increases farmers' income and improves animal health, wool quality, and land health.

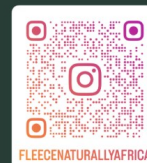


WHAT IS REQUIRED OF A COMMUNITY TO BE PART OF RWS AND FLEECE NATURALLY?

To join, all farmers must agree through their Farmer's Association and follow their Rangeland Stewardship Agreement. Farmers must also manage their animals and land according to RWS guidelines.

WHAT ARE THE BENEFITS OF RWS AND FLEECE NATURALLY TO FARMERS AND COMMUNITIES?

- Healthier animals through better breeding and care.
- Healthier land through managed grazing by trained eco-rangers.
- Better quality fleece from improved breeding, feeding, and animal care.
- Access to shearing and higher price at wool sales
- Access to premium wool markets in the future.



Learn more:
0678106453



Fleece Naturally Africa
1 Hawkins Avenue, Matatielle, 4730

Important Vaccination Program Protects Young Flocks



Meat Naturally Africa partnered with Afrivet to implement a vaccination campaign against *pulpy kidney disease* for the grazing associations at Vukuzenzele and Zimele. These grazing associations are under Meat Naturally (GRASS) programme and Fleece Naturally which share the same objective of communal development and empowerment.

The campaign was aimed at vaccination of only lambs in order to reduce mortalities and increase weaning rate, another critical aspect of production. Pulpy kidney disease is a bacterial disease that kills lambs if they are unvaccinated, even those in good health. Meat Naturally provided the grazing associations with bottles of PULPYVAX, a vaccine for pulpy kidney disease, as a token of compliance.

Pulpy kidney is a clostridial disease that affects sheep, goats and cattle grazing in fast growing pastures or on a carbohydrate diet. It usually manifests in young, fast growing animals that are unweaned or recently weaned lambs. It is caused by an overgrowth of a specific bacteria called *Clostridium perfringens Type D*. A sudden change in diet, such as moving livestock to lush pastures or heavy grain feeding, causes rapid multiplication of the bacteria and associated deadly toxin which is absorbed into the blood stream and causes significant damage to multiple body organs. In unvaccinated animals, pulpy kidney results in very sudden death, often following terminal convulsions. Diagnosis is difficult in ante-mortem and often done in post-mortem. The disease has no treatment and can only be prevented through vaccination of livestock.

Both grazing associations vaccinated a combined total of 282 lambs against pulpy kidney using Pulpyvax. With the help and assistance from farmers and Ecorangers, no challenges were encountered. With step one now completed, we will now be considering other aspects of production.



Photo Journal of Meat Naturally Africa in KwaZulu-Natal



Afrivet technicians have conducted training for grazing associations in the northern part of KwaZulu-Natal to assist farmers with animal health issues including disease identification and diagnosis, treatments and prevention, and control. Since the tick population will start to rise due to favourable temperatures and moist conditions, the trainings also included the common diseases that are occurring in the wet season.



Farmers and Ecorangers were trained on how to weigh animals, calculate dosage and how to inject macrocyclic lactones subcutaneously.



As a result of the training sessions, some farmers started preparing for dipping to control ticks. Here they are busy thoroughly cleaning the dip tank. Tick control starts when there are few visible ticks.



Meat Naturally, Kwanalu, KZN agricultural department, Ulundi's livestock theft unit and Red meat Producers Organization (RPO) partnered on livestock awareness with an aim to address all possible ways to reduce livestock theft.

Farmers brought concerns about stock theft within their communities. The most important remedy was to apply for branding certificates and then brand livestock at an early age for easy identification. Farmers under the Meat Naturally (GRASS) programme supported planned grazing with managed livestock. There was also a discussion of market access through auctions and the documentation that needs to be in place to participate in them.

The event took place on 23 October 2024 at Ulundi. The same event was held in Boston on 17 October 2024 with Magma security, Pietermaritzburg agricultural department and the Institute of Natural Resources.

Vaccines Ward off Lumpy Skin Disease in Cattle

Meat Naturally Africa in partnership with Afrivet, CEET and farmers embarked on a journey under the Meat Naturally (GRASS) programme to vaccinate cattle from Matheko grazing association against lumpy skin disease. The goal was to vaccinate at least 75-80% of the cattle population and reduce the chance of lumpy skin disease outbreak in 2024-25 for rural communal farmers.

Lumpy skin is a viral and vector borne disease caused by *Capripoxvirus*. It affects cattle mainly during summer months and is characterized by skin nodules, nasal discharges, fever, salivation and secondary infections. The disease is transmitted by biting insects, mainly mosquitoes. Currently there is no treatment that can kill the virus once it has infected an animal.

In unvaccinated animals, the virus will multiply, causing damage until the immune system activates and protects the animal two weeks after first exposure. However, we only provide supportive treatment of antibiotics and supplementation if the disease has been identified early. The aim of supportive treatment is to protect the animal from secondary bacterial infection and maintain its energy during recovery. The best preventative measure is vaccination primarily and use of acaricides that are insect repellent.

In collaboration Meat Naturally Africa, Afrivet, CEET and farmers vaccinated a total of 346 cattle in Matheko grazing association Lusikisiki. Meat Naturally Africa supported the farmers with financial incentive according to the grazing's association H4H Levels, which is Level 2 of rangeland management. This enabled purchase of the vaccines at retail stores and successful implementation of the campaign in partnership with relevant stakeholders (CEET & Afrivet).

In a remarkable display of community spirit and proactive farming practices, The Frank Grazing Association also successfully vaccinated 168 cattle against lumpy skin disease (LSD). This collaborative effort fulfils the herd health plan that was developed by Afrivet with financial support from the GRASS programme of Meat Naturally Africa and TASC.

In the year 2021-2022 there was an outbreak of lumpy skin disease which resulted in high mortality rate of cattle. It was triggered by high rainfall and a surge in mosquito and biting fly populations that summer. The outbreak not only killed the valuable animals but also left the surviving cattle with damaged skin hides, rendering them unsellable and further exacerbating economic losses.

Bioblitz-ing: Exploring rangeland biodiversity beyond grass!

On 23 September 2024, we hosted our first Bioblitz at Meat Naturally with great success! This event was part of the annual international Great Southern Bioblitz: uMzimvubu expedition. Led by the Siyakhula Grazing Association, we explored the rangeland area in Siqhungwini Village. It is one of a few sites in the Tsitsa Catchment that survived wildfires during the recent fire season. Therefore, we selected this site for the Bioblitz to start building a “biodiversity inventory” and evidence of how the exclusion of fire affects life in rangelands.

The Bioblitz is a stepping stone towards incorporating more biodiversity assessments and monitoring in sites that are under Meat Naturally (GRASS) programme. Over time our rangeland monitoring efforts will translate into actionable lessons for improved livestock production, restored ecosystems, reduced wildfire risks and growing local resilience to climate impacts.

Our implementing partners, LIMA, AfriVet and landscape-based stakeholders including WWF-SA and SANParks, braved the cold weather and supported us with the Bioblitz. Thanks to the farmers for welcoming us and expressing appreciation for hosting the BioBlitz in their village. Their presence improved our understanding of the land-use patterns, cultural context and environmental history of the site. The number of sightings logged via the iNaturalist App shows a snapshot of a potentially substantial number of diverse plants and insects found in the area.

We commend our Ecorangers, technical and extension teams, in committing to regenerative grazing, fire management and biodiversity assessments to fuel rangeland restoration for the future.



The Importance of Minimal Supplementation for Cattle in South Africa's Communal Farming

In the diverse landscapes of South Africa, communal farmers play a vital role in the agricultural sector, particularly in livestock production. Among the key challenges they face is ensuring the health and productivity of their cattle, especially during the winter months when forage quality declines. Here, phosphate, protein, and winter licks emerge as essential components in enhancing cattle nutrition and overall farm productivity.

The Role of Phosphate

Phosphate is a crucial mineral that supports various physiological functions in cattle. It is vital for energy metabolism, bone development, and reproductive health. In South Africa, many soils are deficient in phosphorus, which can lead to low forage quality and reduced animal performance. For communal farmers, supplementing cattle diets with phosphate can significantly improve growth rates, milk production, and overall herd health. This is particularly important during the dry winter months when pastures are less nutritious.



The Importance of Protein

Protein is another essential nutrient that plays a critical role in the growth, maintenance, and overall health of cattle. It is necessary for muscle development, milk production, and the synthesis of enzymes and hormones. During winter, when natural forage is often low in both quantity and quality, the inclusion of protein in winter licks becomes increasingly important.

- ◆ **Muscle Development and Growth:** Adequate protein intake is vital for young, growing cattle. It supports muscle development, leading to improved weight gain and overall body condition.
- ◆ **Milk Production:** For lactating cows, protein is essential for maintaining milk yield. Insufficient protein can lead to decreased milk production and poorer milk quality, directly impacting the farmer's income.
- ◆ **Reproductive Health:** Protein also plays a role in reproductive performance. Cows with adequate protein levels are more likely to conceive and maintain healthy pregnancies, leading to higher calving rates and better herd productivity.

Benefits of Winter Licks

Winter licks are formulated mineral and nutrient supplements designed to be offered to cattle during the winter season. These licks often contain essential minerals such as phosphorus, calcium, and magnesium, along with protein sources and vitamins. The use of winter licks helps to:

- ◆ **Enhance Nutritional Intake:** As natural forage becomes scarce, winter licks provide a concentrated source of nutrients, ensuring cattle receive the essential minerals and protein they need for maintenance and production.

- ◆ **Improve Health and Immunity:** Adequate mineral and protein supplementation boosts the immune system, reducing the risk of diseases that can arise during periods of nutritional stress.
- ◆ **Support Reproductive Performance:** Proper mineral and protein balance is crucial for reproductive health in cattle. Phosphate and protein in winter licks can aid in improving conception rates and overall fertility.
- ◆ **Increase Productivity:** By maintaining cattle health and nutritional status, winter licks can lead to improved weight gain and milk yields, directly benefiting the livelihoods of communal farmers.



Cost vs. Production Benefits

While the initial investment in phosphate and protein supplements in winter licks may seem significant for communal farmers, the potential production benefits far outweigh these costs.

- ◆ **Cost of Supplements:** The price of phosphate and winter licks varies, but communal farmers can often find cost-effective options that fit their budgets. For instance, a typical winter lick might cost between R200 to R350 per 25 kg bag or block, depending on the mineral and protein composition.
- ◆ **Increased Weight Gain:** Research shows that cattle receiving adequate mineral and protein supplementation can gain anywhere from 0.5 to 1 kg more per day compared to those that do not. Over a winter grazing period of three to four months, this can translate into significant weight gain, leading to higher market prices upon sale.
- ◆ **Reduced Veterinary Costs:** Healthier cattle are less susceptible to diseases, which can reduce veterinary expenses. The cost of treating illnesses can quickly surpass the investment in supplements, making mineral and protein licks a smart economic choice.
- ◆ **Enhanced Reproductive Efficiency:** Improved fertility rates can lead to higher calving percentages. This not only boosts herd numbers but also enhances future income potential from both meat and milk production.

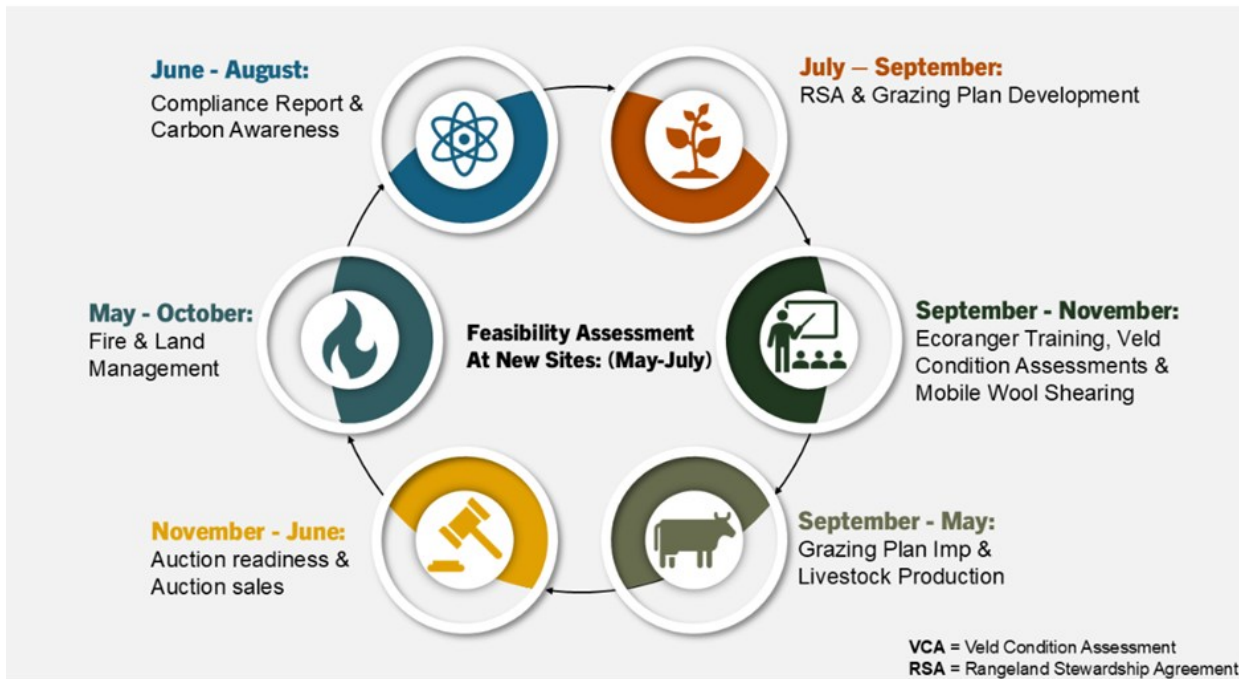
In Conclusion

For communal farmers in South Africa, the strategic use of phosphate, protein, and winter licks is not just an option but a necessity for sustainable cattle farming. The initial costs associated with purchasing these supplements are quickly offset by the enhanced productivity, health, and reproductive performance of the cattle. By addressing mineral and protein deficiencies and improving the nutritional profile of their herds, these farmers can secure better health outcomes and economic stability within their communities.

As climate challenges and resource limitations persist, the importance of such nutritional strategies will continue to grow, making them critical to the future of communal agriculture in the region. Investing in phosphate and protein-rich winter licks is not just an expenditure; it is a crucial step towards a more productive and sustainable farming future.

Meat Naturally’s Carbon Initiative Annual Cycle of Activities

Between September and November, farmers associations working with Meat Naturally Africa’s Eastern Cape and KwaZulu-Natal (GRASS) programme in South Africa’s carbon initiative, GRASS, start implementing their annual grazing plan. The exact timing is dependent on the first rains and grass re-growth that farmers and Ecorangers witness. The cycle of monthly activities continues to be dependent on the ecological cycle of grass re-growth. The diagramme below shows the annual plan of a “typical” site as well as a description of the key activities implemented during the year.



<p>Rangeland Stewardship Agreement & Grazing Plan Development</p>	<p>A rangeland stewardship agreement is a voluntary agreement between a community (via a formalised Grazing Association) and either Meat Naturally Africa or an NGO implementing partner to manage their rangeland in a sustainable way. This starts with recreating a single, combined village herd and managing grazing (with the help of Ecorangers) according to a site-specific design that will mimic historic use by wildlife. An important principle in the agreement is setting aside a portion of rangeland as a rest camp and implementing rotational grazing to enable degraded grazing areas to recover. MN provides technical expertise from their rangeland ecologists to design the grazing plan in consultation with the community. Veld condition assessments are done at the start of an agreement and at regular intervals thereafter to monitor change in rangeland health. There are different levels that communities can aspire to, which are re-negotiated each year in the stewardship agreement as understanding and social cohesion for implementation grow. The basic level is seasonal rest, entry level requires implementation of a 4-camp rotational grazing; while the optimal level require combined herding and management of livestock based on ecological indicators of timing for rest and movement. Adherence to optimal levels yields more benefits for the farmers but requires experience to implement.</p>
<p>Ecoranger Training</p>	<p>Grazing associations that want to be part of the Meat Naturally Africa model and improve their grazing lands and animal productivity are able employ local herders as Ecorangers. These individuals learn to implement the new system and assist the associations to maximize their potential as business units. Ecorangers are upskilled through a training programme that is done in partnership with Afrivet and Meat Naturally. Ecorangers experience a 3-year apprenticeship consisting of both formal theoretical classes and on-the-job training that is combined with mentorship by local champion farmers and Ecotrainers.</p>

<p>Ecoranger Training</p>	<p>Ecotrainers are previous Ecorangers who have been identified and upskilled further to train other Ecorangers in their area, using a “train the trainer” model. The Ecoranger model is intended to make herding a recognized and respected profession in the community and not something that is done by young boys only.</p> <p>The farmers in a particular grazing area will select and appoint the Ecoranger candidates to manage their cattle. Meat Naturally and the Implementing Partners support farmers with the recruitment and interview process and Meat Naturally provides a payroll service for associations who employ Ecorangers. All the terms are included in the Rangeland Stewardship Agreement.</p> <p>Skills an Ecoranger will learn through the training programme include:</p> <ul style="list-style-type: none"> * Environmental management * Rangeland management * Animal health and production * Record-keeping * Economic aspects of livestock farming * Life skills
<p>Grazing Plan Implementation & Livestock production</p>	<p>In exchange for agreeing to allow their animals to be part of the Association herd and implementing the grazing plan in the Rangeland Stewardship Agreement, livestock owners receive feedback and advice on implementing their plan. They also receive animal health training, veterinary and nutritional support (e.g. vaccinations and feed supplements), and are supported to obtain ownership certificates and branding. In South Africa, Meat Naturally Africa partners with Afrivet to provide much of this animal health training and input. Meat Naturally Africa monitors implementation of the grazing plan through Ecotrainers and Ecomonitors that are supported by Meat Naturally’s ecologists.</p>
<p>Auction Readiness & Auction Sales</p>	<p>As an incentive for adhering to the requirements of the Rangeland Stewardship Agreement, members of grazing associations are able to sell their registered animals/animal products through a Meat Naturally mobile auction, mobile wool-shearing, or mobile abattoir. Payments for animals/products are made directly into farmer’s bank accounts a few days after the market event.</p> <p>In the weeks leading up to a sale activity, Ecotrainers and implementing partners work with the farmers on a number of market readiness activities to ensure the farmers have all the necessary paperwork required for sale into the formal market and that their animals are in prime condition before the sale.</p>
<p>Fire & Land Management</p>	<p>Fire Management - Meat Naturally’s Community-Based Fire Management (CBFM) programme is designed to empower communities with the knowledge and tools to prevent and manage wildfires, protecting livelihoods and the environment. CBFM is essential for safeguarding the long-term sustainability of the landscapes that Meat Naturally supports as uncontrolled fire can severely damage rangelands and reduce carbon stocks and increase emissions. MN engages with a community to establish and train a fire management committee that undertake several activities to minimize the occurrence of unwanted fires. Strategic collaborations have been forged with Disaster Management Agencies, the Working on Fire Programme, and local forestry companies.</p> <p>Land Management – In many communities invasive alien species are encroaching into rangelands, decreasing available grazing. Grazing associations are encouraged to collectively tackle invaded areas and rehabilitate degraded areas. Meat Naturally Africa provides tools and training to those that do so. Erosion control activities are also supported in the winter months to prevent further degradation in summer storms.</p>
<p>Compliance Reports & Carbon Awareness</p>	<p>At the end of the grazing season, Meat Naturally Africa compiles a summary assessment of how successful participating farmer associations were at implementing their grazing plan and achieving regeneration impacts. Although carbon impacts are long-term and take numerous years to materialize, some changes resulting from resting different grazing camps or preventing fire on areas that have suffered from over-burning due to unmanaged wildfires, can be seen immediately. Using veld condition assessment data and photographs, feedback reports are prepared for farmers associations and our investors. We also use the winter months to conduct informational sessions on how regenerative land and livestock management generate carbon and discuss the opportunity to work together at a community level to earn revenues for self-determined initiatives that improves well-being.</p>

A transformative journey of purposeful leadership



In October, a group of eleven emerging leaders embarked on a transformative leadership development program in the stunning Drakensberg Wilderness. The experience was designed to help middle managers from Meat Naturally discover their authentic leadership potential, strengthen their self-awareness, and equip themselves with practical tools to navigate the complexities of leadership.

Over the course of three days, participants engaged in a series of experiential outdoor learning activities, reflective exercises, and crucial conversations that pushed them to explore their inner strengths, face their leadership challenges, and ultimately emerge more empowered, confident and purpose driven leaders.

This program created a ripple effect that will extend far beyond the weekend. Their leadership stories, forged in the Drakensberg wilderness, will inspire and guide the participants as they return to their places of work.

New Branding Iron Set Earned from Profit Shares

On September 5th, Meat Naturally Africa's CEO Sarah Frazee joined the Makhunga Farmers Association in Upper Tsitsana to celebrate a significant milestone: the investment of their profit-share funds. The event marked the handover of a new branding iron set and materials for their dip tank, valued at R18,000, chosen by the Association members themselves.

This investment stems from the auctions organized in partnership with neighboring villages, Hlankomo and Lower Tsitsana, demonstrating the power of collaboration. By acquiring their own branding iron set, the Makhunga Association can now offer branding services at a fee, generating additional income for their members. This initiative is also expected to streamline the sale of livestock at future auctions, creating even more opportunities for financial growth.

Congratulations to the Makhunga Association on this inspiring achievement! Meat Naturally Africa proudly supports this journey and looks forward to witnessing their continued success.



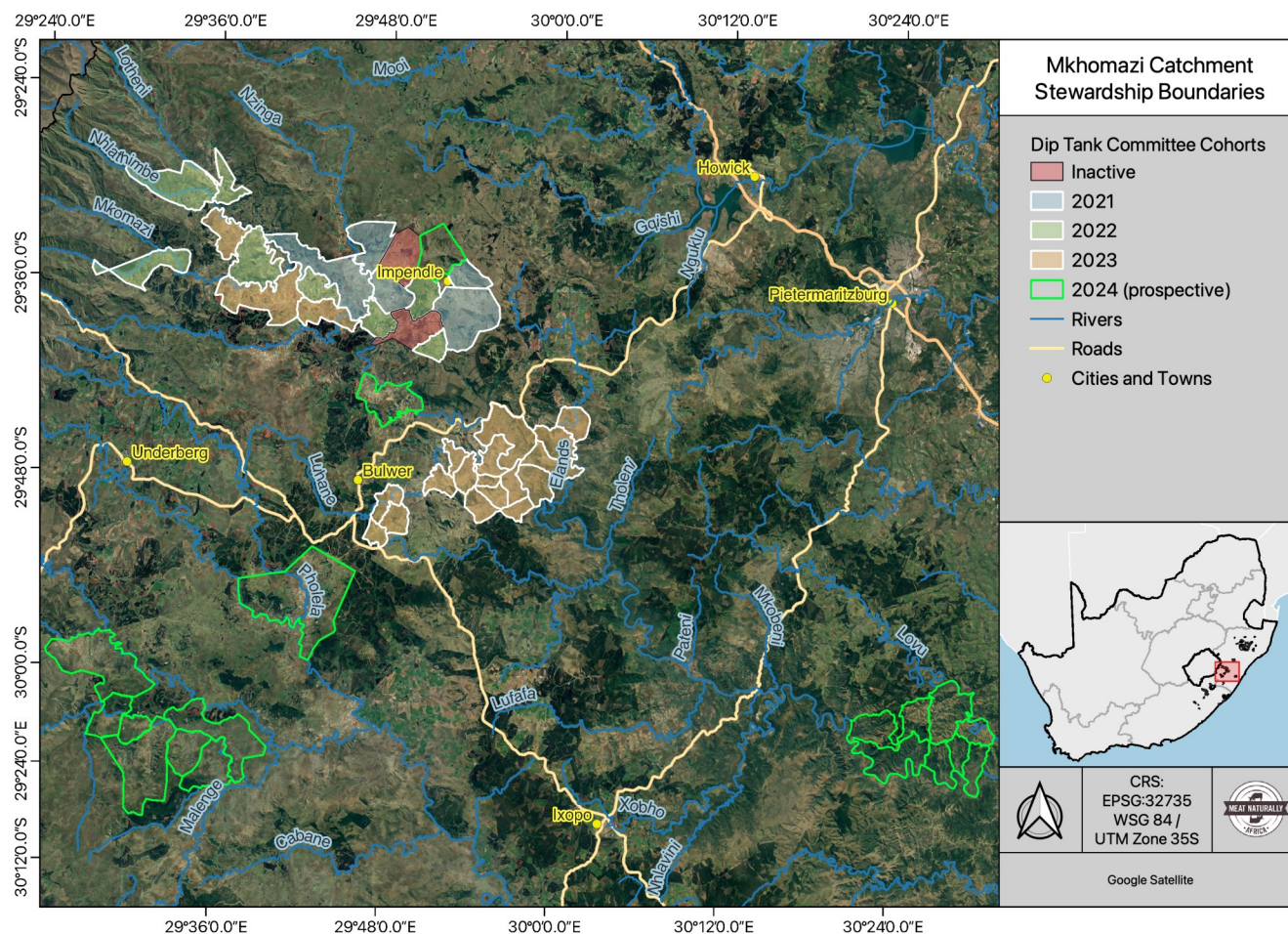
The Power of Partnerships

The partnership between Meat Naturally and the Institute of Natural Resources (INR) started in 2020 when INR agreed to be part of an effort to understand and support communities to access carbon finance for rangeland restoration efforts.

INR was willing to be an implementing partner for the emerging Grassland Restoration and Stewardship in South Africa (GRASS) programme in the Mkhomazi Catchment—one of seven regions where Meat Naturally Africa is active. In the partnership, Meat Naturally provided the technical support and implementation framework for the carbon financing to be unlocked, while the INR team led all farmer engagements—introducing the programme to communities, conducting feasibility assessment meetings, contributing to baseline assessments, assisting farmer associations to organise and implement good governance, and trouble-shooting implementation challenges.

In 2021, the INR team secured Rangeland Stewardship Agreements with six communities on 12,619 hectares, 68% of which was natural rangeland (the rest of which would be homesteads, croplands, or forestry plantation areas.) This year, the INR team will be supporting efforts across 44 communities on nearly 67,000 ha, a growth of over 525% in just four years! Importantly, two of the initial six associations INR works with, Gomane and Inzinga in the Impendle area, are the best performing of the 114 associations Meat Naturally is engaged with.

With INR as a partner, the future of South Africa's grasslands—and the communities that depend on them—has never looked greener.



MNK Bomme Supplier Club Update



Supporting Local Farmers with Sustainable Meat

Meat Naturally Kruger sources cattle from local farmers involved in the Conservation South Africa's Herding for Health model. Our cattle are processed in a registered mobile abattoir, transforming them into quality meat products available to everyone. We proudly supply local butchers with sustainable meat from regenerative livestock sourced from the Kruger to Canyons communities.

Empowering Women Entrepreneurs

In September 2024, MN Kruger Meats hosted a series of workshops aimed at empowering women (Bomme) interested in generating additional income through the resale of our processed meat products. This initiative led to the formation of the Bomme Supplier Club, which allows members to purchase meat in bulk at favorable prices for resale within their communities. Many women expressed enthusiasm for offering our sustainably sourced meat products.

Success Story: Nthabiseng Mosenohi

After engaging with the club, Nthabiseng Mosenohi placed her first order in October 2024, which included 6 kg of stew, 2 kg of mince, 2 kg of wors, and 5 kg of bones. Her customers have been thrilled with their purchases, with one remarking, "The meat is so nice and tastes amazing; you can truly appreciate its organic texture." This feedback underscores the community's satisfaction with MN Kruger Meats' offerings.

Together, we are fostering a sustainable and supportive network that benefits both producers and consumers. Thank you for being part of our journey!

Ecorangers 2024 training officially wrapped up!

Meat Naturally and its partners launched the 2024 intake of Ecorangers, marking a significant milestone in the company's expansion plan. This new cohort consisted of over 130 Ecorangers employed by the associations dedicated to regenerative grazing management. The goal is to engage with 15,000 farmers and manage 1,000,000 hectares of rangeland by 2030.

The rigorous selection process began in late September. Prospective candidates, chosen by their respective associations, were interviewed by a panel that included Meat Naturally and its Implementation Partners. This panel evaluated each candidate's understanding of cattle breeds, herd health, palatable grass species, and on their commitment to the community and the environment. Names of successful candidates were then sent back to the Associations for final approval.

Training, facilitated by Meat Naturally's training team, ran from mid-October until mid-November. This year's training interventions focussed on the new Associations in the Wild Coast, Ngcobo, the Upper uMvimvubu, the uMzimkhulu, and the Upper Tugela catchments.

Notably, this was the first time the Meat Naturally EcoTrainers have conducted the Ecoranger Foundation course on their own. The feedback was overwhelmingly positive, and we wish them success in their continued role as trainers and mentors.



Training in progress



Give the Gift of Meat Naturally

LOOKING FOR A MEANINGFUL GIFT?
GIVE A CHILD THE GIFT OF NOURISHMENT



MAKE A DIFFERENCE!!

GIVE A GIFT OF **1000 RAND** ON BEHALF OF SOMEONE SPECIAL
YOUR GIFT WILL FUND 10KG OF NUTRITIOUS BEEF STEW OR MINCE TO 150 CHILDREN THROUGH OUR EARLY CHILDHOOD DEVELOPMENT FEEDING SCHEME.

YOUR GENEROSITY CAN CHANGE LIVES



HOW IT WORKS

Make a donation of 1000 Rand or more on behalf of someone you want to honor.

Meat Naturally will list their name on www.meatnaturallyafrica.com celebrating their gift

Nourish Eco Village will incorporate nutritious Meat Naturally protein into children's meals through their feeding scheme.

If you wish to be recognised for your donation we will include your name too!

NOURISH YOUNG LIVES WITH EVERY DONATION

For more information contact matome@meatnaturallyafrica.com



RUNNING FOR RANGELANDS

Sponsored by its carbon partners TASC and Jonathon Norton, the Meat Naturally Africa's staff and Ecorangers participated in the Run The Berg Trail Run on 28 September 2024. The group donned their new gear sporting the Running for Rangelands tag line and enjoyed a wonderfully organized event!! With only three of the twenty-two runners having ever participated in an organized trail run before, the group was nervous on race day. But their conditioning through working with regenerative livestock management paid off and the majority of the runners came in within the first cohort of participants to cross the finish line.





In the 25km, Siyanda Khanyile took first place, arriving a full twelve minutes ahead of the elite runners in the field. He was congratulated by race organizer Warren King for his achievement.



Our full podium finishers (l-r) Siyanda Khanyile (1st place-25km); Nosi Mtati (1st place-13k) Lugelo Madlala (3rd place-13k); Jonathon Thamahane (2nd place-13k)

